

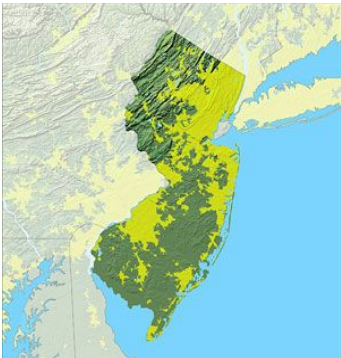
New Jersey



Newark is the most populated city in New Jersey. Most people think that all of New Jersey is urban yet, it is still 10% rural. New Jersey has the highest population density in the United States of America.



The part of New Jersey that is rural looks like the farm above. It is very beautiful and spread out. When you look above, you will see that there is a picture of blueberries and cranberries. This is because these are the berries that we are famous for nationwide. New Jersey is also actually called the "Garden State."



This is New Jersey. Some people think that it looks like a man with a peg leg and others think that if you flip it upside down, it's a unicorn.



Wildwood is an amusement park in southeast New Jersey. Wildwood has over 100 rides and attractions, three beach front boardwalks, and world class roller coasters!



Cape May, New Jersey, is a great place to visit for a vacation. It has clean sand, the ocean, wonderful shops, an awesome boardwalk, even a famous lighthouse!



This is Giggleberry. Giggleberry is a fair in Peddler's Village, PA. Giggleberry is a three story high jungle gym, an arcade, and a children's water play place. All in one!